





What connects us to the place we call home?

Perhaps it's nature's gentle ways we've grown.  
Living well, in a place crafted with artistry.  
A life where harmony blends with nature's gleams.



A DESIRED LOCALE.  
ELEVATED BY NATURE.  
HONED TO PERFECTION.

PINE TREE HILL

ARTIST'S IMPRESSION



# PINETREE HILL

SINGAPORE SPORTS HUB

ORCHARD ROAD SHOPPING BELT

MARINA BAY SANDS

SINGAPORE BOTANIC GARDENS

CENTRAL BUSINESS DISTRICT

CLEMENTI NATURE TRAIL

THE STAR VISTA

MAPLETREE BUSINESS CITY

SINGAPORE SCIENCE PARK I & II

NATIONAL UNIVERSITY OF SINGAPORE

CLEMENTI FOREST

HOLLAND VILLAGE

HENRY PARK PRIMARY SCHOOL

BUONA VISTA MRT

ONE-NORTH BUSINESS PARK

DOVER MRT

SINGAPORE POLYTECHNIC

ULU PANDAN PARK CONNECTOR

ARTIST'S IMPRESSION

# A DESIRED LOCALE.

Situated in District 21, within the prestigious Mount Sinai/ Pandan Valley neighbourhood, with top-tier educational institutions, commercial, dining and lifestyle options.



THE STAR VISTA, BUONA VISTA



Nature adventure awaits along the Rail Corridor, Ulu Pandan Park Connector, the hidden gem of the Clementi Forest, upcoming Old Jurong Line and Clementi Nature Trail.





Nurture your future generation with renowned schools and institutions.

within 1km radius

Henry Park Primary School  
Pei Tong Primary School

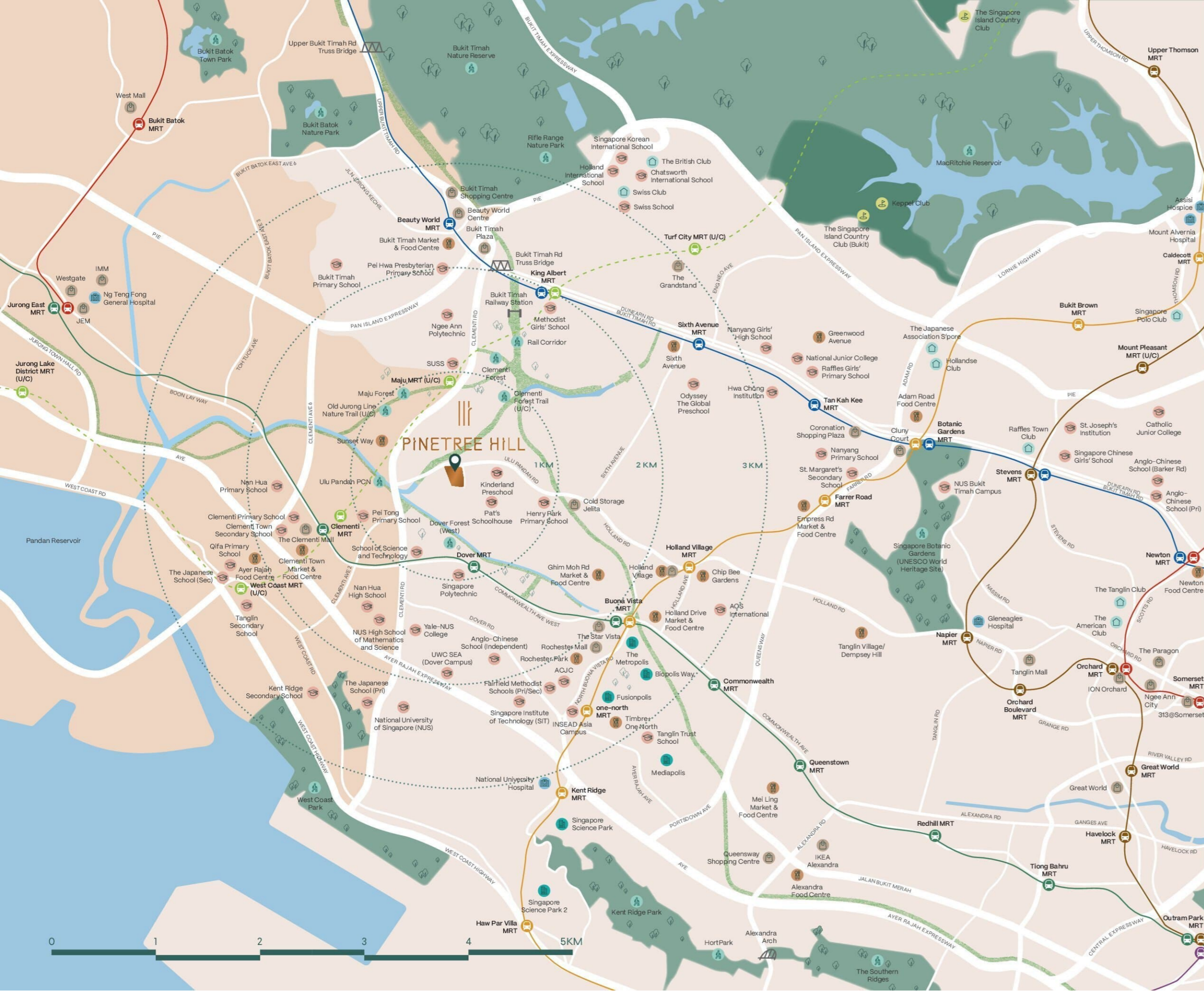
within 2km radius

Pei Hwa Presbyterian Primary School  
Methodist Girls' School  
Nan Hua High School  
NUS High School  
Singapore Polytechnic  
Ngee Ann Polytechnic

within 3km radius

National University of Singapore





-  CONNECTIVITY
-  EDUCATION
-  NATURE/LEISURE
-  LIFESTYLE
-  FOOD & DINING
-  BUSINESS HUBS
-  HEALTHCARE
-  COUNTRY CLUBS
-  EAST-WEST LINE
-  NORTH-SOUTH LINE
-  NORTH-EAST LINE
-  CIRCLE LINE
-  DOWNTOWN LINE
-  THOMSON-EAST COAST LINE
-  CROSS ISLAND LINE (U/C)
-  RAIL CORRIDOR/ NATURE TRAIL/ PARK CONNECTOR
-  CENTRAL REGION
-  OUTSIDE CENTRAL REGION



EXPLORE NEW ADVENTURES FOR ALL YOUR LIFESTYLE NEEDS.



Scan here to explore curated trails that your new neighbourhood has to offer.



## CONNECT SEAMLESSLY TO WORK AND PLAY

Live in an exciting and energetic neighbourhood close to a prime education belt, with vibrant F&B scene in Holland Village and business opportunities in one-north.

MRT	
Dover MRT	15 mins*
Clementi MRT (Interchange)	1 stop away (to future Cross Island Line)
Buona Vista MRT (Interchange)	1 stop away (to Circle Line)
Holland Village MRT (via Buona Vista on Circle Line)	2 stops away
one-north MRT (via Buona Vista on Circle Line)	2 stops away
Raffles Place MRT (Interchange)	8 stops away (to North South Line)

EXPRESSWAYS	
Minutes drive away	
Pan Island Expressway (PIE)	
Ayer Rajah Expressway (AYE)	

RENOWNED PRIMARY SCHOOLS	
Within 1km radius	Within 2km radius
Henry Park Primary School	Pei Hwa Presbyterian Primary School
Pei Tong Primary School	Methodist Girls' School

NATURE TRAILS & ATTRACTIONS	
Clementi Forest	3 mins*
Ulu Pandan Park Connector	5 mins*
Rail Corridor	15 mins*
Singapore Botanic Gardens	10 mins*

LIFESTYLE & DINING	
Minutes drive away	
Jelita Shopping Centre	5 mins*
The Clementi Mall	5 mins*
Holland Village	8 mins*
The Star Vista	8 mins*
Dempsey Hill	10 mins*
The Grandstand	10 mins*
ION Orchard	15 mins*

BUSINESS HUBS	
Minutes drive away	
one-north Business Park	10 mins*
Singapore Science Park I & II	15 mins*

\*Based on estimated travel time, subject to traffic and weather conditions.

## ELEVATED BY NATURE.

Rejuvenate yourself in nature-inspired designs and amenities, providing a sanctuary from the outside world.

OASIS PAVILION  
ARTIST'S IMPRESSION





Come home to a restorative oasis from the hustle and bustle outside.

50m LAP POOL  
ARTIST'S IMPRESSION



Revitalise in spaces created in extension of the natural surroundings.

FOREST PLAYGROUND  
ARTIST'S IMPRESSION



FLOWER SWATHE  
ARTIST'S IMPRESSION



Iconic pine-cone shaped pavilions offer breezy, sun-dappled relaxation coves overlooking lush greenery.

PINETREE NEST  
ARTIST'S IMPRESSION



FLOATING PAVILION  
ARTIST'S IMPRESSION

Retreat into curated intimate spaces.



# SMART AND GREEN HOME FOR THE FUTURE



## SMART HOME FEATURES



### SMART HOME HUB

Your one-stop platform to access all your smart and eco-friendly home needs. Able to be controlled remotely via mobile phone, making life just that much simpler.



### FACILITIES BOOKING

Book condominium facilities promptly via your mobile app or access card. On the day and time of usage, simply enter via your mobile app or access card.



### VISITOR E-REGISTRATION

Having guests over is made seamless at Pinetree Hill. Simply pre-register them online and send them a QR code for entry upon arrival.



### SMART IP INDOOR CAM

A portable camera for remote home security and surveillance. With two-way audio communication, motion detection, and video recording, peace of mind is guaranteed.



### DIGITAL LOCKSET

With options of fingerprint, pin code, mobile app or card access, control your front door with utmost ease.



### SMART INFRARED AIRCON CONTROL

Have your home cool and waiting for you with remote access of air-conditioners. While you're out and about, set the temperature and time schedule for the kids at home.



### RENT-AND-RIDE A BIKE

Explore the nearby Ulu Pandan Park Connector and Rail Corridor anytime with the convenience of instant bicycle reservations. Enjoy the freedom and comfort of riding whenever you desire.

## GREEN HOME FEATURES



### EV CHARGING LOT

Trusty EV charging stations can be found in the car park, allowing EV and Plug-in Hybrid EV car owners true ease and reliability in the pursuit of sustainable living.



### SOLAR PANEL

Solar panels offset energy consumption in common areas. All appliances provided have the highest rating in the class under The Energy Label by The National Environment Agency (NEA).

## SAFE HOME FEATURE



### UV CLEAN AIR

With an UV Clean Air system, circulated air in lifts are regularly sanitised and purified.

# SITE PLAN

A tranquil enclave for you and your loved ones.  
Step into serenity, where nature is amplified.  
PineTree Hill is an oasis for you to relax and revitalise.

## ARRIVAL (1ST STOREY)

- 1 Guardhouse
- 2 Side Gate
- 3 Arrival Plaza
- 4 Drop-off (Oasis Pavilion)
- 5 Pine Grove Pond
- 6 Waterwall (The Vertical Oasis)

## BLOOMING SANCTUARIES (1ST STOREY)

- 7 Cyathea Garden
- 8 Maranta Garden
- 9 Heliconia Garden
- 10 Reflective Pond
- 11 Forest Pavilion (Pinetree Nest)
- 12 Flower Swathe

## RELAXING RETREATS (1ST STOREY)

- 13 Outdoor Social Lounge
- 14 Gym and Social Space (The Commune)
- 15 Function Room 1 (The Royal)
- 16 Function Room 2 (The Tangerine)
- 17 Function Room 3 (The Orient)
- 18 Social Cove
- 19 Gourmet Pavilion
- 20 Japanese Gourmet Pavilion
- 21 Floating Pavilion
- 22 BBQ Pavilion
- 23 Karaoke Room (Basement)

## REVITALISING ENCLAVES (1ST STOREY)

- 24 Half Basketball Court
- 25 Tennis Court
- 26 50m Lap Pool
- 27 Pool Deck
- 28 Pool Cabanas
- 29 Kid's Play Pool
- 30 Oasis Pool
- 31 Aquatherapy Pool
- 32 Forest Playground
- 33 Exploration Trail
- 34 Outdoor Gym

## OTHER FACILITIES

- 35 Changing Rooms (1st storey)
- 36 Emergency Exit Side Gate (1st storey)
- 37 Bicycle Bays (Basement)
- 38 Genset (Basement)
- 39 Bin Centre (Basement)
- 40 Electrical Sub-Station (Basement)
- 41 Management Office (Basement)
- 42 Resident's Lobby (Basement)
- Outline of Water Tank at Roof
- VS Ventilation Shaft (1st storey)



# CHOICE UNITS

## 30 PINE GROVE, SINGAPORE 598441

UNIT/ FLOOR	01	02	03	04	05	06	07	08
24	3B2(a)	2BPS1	1BS	3BPS1(a)	4BP1(a)	2B(a)	2BP3(a)	4B(a)
23	3B2	2BPS1	1BS	3BPS1	4BP1	2B	2BP3	4B
22	3B2	2BPS1	1BS	3BPS1	4BP1	2B	2BP3	4B
21	3B2	2BPS1	1BS	3BPS1	4BP1	2B	2BP3	4B
20	3B2	2BPS1	1BS	3BPS1	4BP1	2B	2BP3	4B
19	3B2	2BPS1	1BS	3BPS1	4BP1	2B	2BP3	4B
18	3B2	2BPS1	1BS	3BPS1	4BP1	2B	2BP3	4B
17	3B2	2BPS1	1BS	3BPS1	4BP1	2B	2BP3	4B
16	3B2	2BPS1	1BS	3BPS1	4BP1	2B	2BP3	4B
15	3B2	2BPS1	1BS	3BPS1	4BP1	2B	2BP3	4B
14	3B2	2BPS1	1BS	3BPS1	4BP1	2B	2BP3	4B
13	3B2	2BPS1	1BS	3BPS1	4BP1	2B	2BP3	4B
12	3B2	2BPS1	1BS	3BPS1	4BP1	2B	2BP3	4B
11	3B2	2BPS1	1BS	3BPS1	4BP1	2B	2BP3	4B
10	3B2	2BPS1	1BS	3BPS1	4BP1	2B	2BP3	4B
09	3B2	2BPS1	1BS	3BPS1	4BP1	2B	2BP3	4B
08	3B2	2BPS1	1BS	3BPS1	4BP1	2B	2BP3	4B
07	3B2	2BPS1	1BS	3BPS1	4BP1	2B	2BP3	4B
06	3B2	2BPS1	1BS	3BPS1	4BP1	2B	2BP3	4B
05	3B2	2BPS1	1BS	3BPS1	4BP1	2B	2BP3	4B
04	3B2	2BPS1	1BS	3BPS1	4BP1	2B	2BP3	4B
03	3B2	2BPS1	1BS	3BPS1	4BP1	2B	2BP3	4B
02								
01								
B								
	GARDEN							
	CARPARK							

BEDROOM	TYPE	AREA
1-Bedroom + Study	1BS	50sqm   538sqft
2-Bedroom	2B	65sqm   700sqft
	2B(a)	79sqm   850sqft
2-Bedroom Premium	2BP1, 2BP2, 2BP3	71sqm   764sqft
	2BP4	72sqm   775sqft
	2BP2(a), 2BP3(a)	85sqm   915sqft
2-Bedroom Premium + Study	2BPS1, 2BPS2	74sqm   797sqft
3-Bedroom	3B1, 3B2	90sqm   969sqft
	3B1(a)	108sqm   1,163sqft
	3B2(a)	109sqm   1,173sqft
3-Bedroom Premium + Study	3BPS1, 3BPS2	113sqm   1,216sqft
	3BPS1(a), 3BPS2(a)	132sqm   1,421sqft
4-Bedroom Deluxe (with Private Lift)	4B	120sqm   1,292sqft
	4B(a)	138sqm   1,485sqft
4-Bedroom Premium (with Private Lift)	4BP1, 4BP2	136sqm   1,464sqft
	4BP1(a), 4BP2(a)	155sqm   1,668sqft
5-Bedroom Premium (with Private Lift)	5BP	161sqm   1,733sqft
Penthouse	PH	267sqm   2,874sqft

## 32 PINE GROVE, SINGAPORE 598442

UNIT/ FLOOR	09	10	11	12	13	14	15	16
24	3BPS1(a)	2BPS1	2BP1	3B1(a)	4B(a)	2BP2(a)	2B(a)	3BPS2(a)
23	3BPS1	2BPS1	2BP1	3B1	4B	2BP2	2B	3BPS2
22	3BPS1	2BPS1	2BP1	3B1	4B	2BP2	2B	3BPS2
21	3BPS1	2BPS1	2BP1	3B1	4B	2BP2	2B	3BPS2
20	3BPS1	2BPS1	2BP1	3B1	4B	2BP2	2B	3BPS2
19	3BPS1	2BPS1	2BP1	3B1	4B	2BP2	2B	3BPS2
18	3BPS1	2BPS1	2BP1	3B1	4B	2BP2	2B	3BPS2
17	3BPS1	2BPS1	2BP1	3B1	4B	2BP2	2B	3BPS2
16	3BPS1	2BPS1	2BP1	3B1	4B	2BP2	2B	3BPS2
15	3BPS1	2BPS1	2BP1	3B1	4B	2BP2	2B	3BPS2
14	3BPS1	2BPS1	2BP1	3B1	4B	2BP2	2B	3BPS2
13	3BPS1	2BPS1	2BP1	3B1	4B	2BP2	2B	3BPS2
12	3BPS1	2BPS1	2BP1	3B1	4B	2BP2	2B	3BPS2
11	3BPS1	2BPS1	2BP1	3B1	4B	2BP2	2B	3BPS2
10	3BPS1	2BPS1	2BP1	3B1	4B	2BP2	2B	3BPS2
09	3BPS1	2BPS1	2BP1	3B1	4B	2BP2	2B	3BPS2
08	3BPS1	2BPS1	2BP1	3B1	4B	2BP2	2B	3BPS2
07	3BPS1	2BPS1	2BP1	3B1	4B	2BP2	2B	3BPS2
06	3BPS1	2BPS1	2BP1	3B1	4B	2BP2	2B	3BPS2
05	3BPS1	2BPS1	2BP1	3B1	4B	2BP2	2B	3BPS2
04	3BPS1	2BPS1	2BP1	3B1	4B	2BP2	2B	3BPS2
03	3BPS1	2BPS1	2BP1	3B1	4B	2BP2	2B	3BPS2
02	3BPS1	2BPS1	2BP1	3B1	4B	2BP2	2B	3BPS2
01								
B								
	GARDEN							
	CARPARK							

## 36 PINE GROVE, SINGAPORE 598444

UNIT/ FLOOR	17	18	19	20	21	22	23
24	4BP2(a)	2BPS2	2BP1	3B1(a)	PH		3BPS1(a)
23	4BP2	2BPS2	2BP1	3B1	5BP	2BP4	3BPS1
22	4BP2	2BPS2	2BP1	3B1	5BP	2BP4	3BPS1
21	4BP2	2BPS2	2BP1	3B1	5BP	2BP4	3BPS1
20	4BP2	2BPS2	2BP1	3B1	5BP	2BP4	3BPS1
19	4BP2	2BPS2	2BP1	3B1	5BP	2BP4	3BPS1
18	4BP2	2BPS2	2BP1	3B1	5BP	2BP4	3BPS1
17	4BP2	2BPS2	2BP1	3B1	5BP	2BP4	3BPS1
16	4BP2	2BPS2	2BP1	3B1	5BP	2BP4	3BPS1
15	4BP2	2BPS2	2BP1	3B1	5BP	2BP4	3BPS1
14	4BP2	2BPS2	2BP1	3B1	5BP	2BP4	3BPS1
13	4BP2	2BPS2	2BP1	3B1	5BP	2BP4	3BPS1
12	4BP2	2BPS2	2BP1	3B1	5BP	2BP4	3BPS1
11	4BP2	2BPS2	2BP1	3B1	5BP	2BP4	3BPS1
10	4BP2	2BPS2	2BP1	3B1	5BP	2BP4	3BPS1
09	4BP2	2BPS2	2BP1	3B1	5BP	2BP4	3BPS1
08	4BP2	2BPS2	2BP1	3B1	5BP	2BP4	3BPS1
07	4BP2	2BPS2	2BP1	3B1	5BP	2BP4	3BPS1
06	4BP2	2BPS2	2BP1	3B1	5BP	2BP4	3BPS1
05	4BP2	2BPS2	2BP1	3B1	5BP	2BP4	3BPS1
04	4BP2	2BPS2	2BP1	3B1	5BP	2BP4	3BPS1
03	4BP2	2BPS2	2BP1	3B1	5BP	2BP4	3BPS1
02	4BP2	2BPS2	2BP1	3B1	5BP	2BP4	3BPS1
01							
B							
	GARDEN						
	CARPARK						

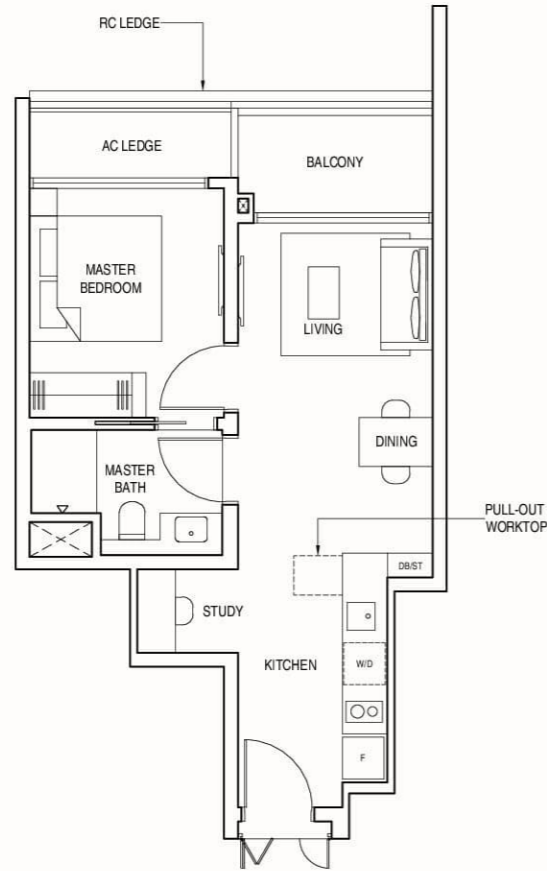
HONED TO  
PERFECTION.



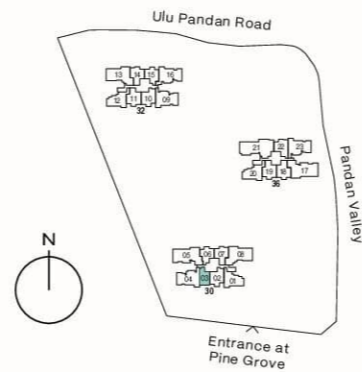
# 1-BEDROOM + STUDY

## TYPE 1BS

50 sqm (538 sqft)  
#03-03 to #24-03



Areas include AC ledge and balcony, where applicable. All RC ledges are excluded from strata area and non-load bearing. The plans are subjected to change as may be required by relevant authorities. All areas and measurements stated herein as approximate and subject to final survey.



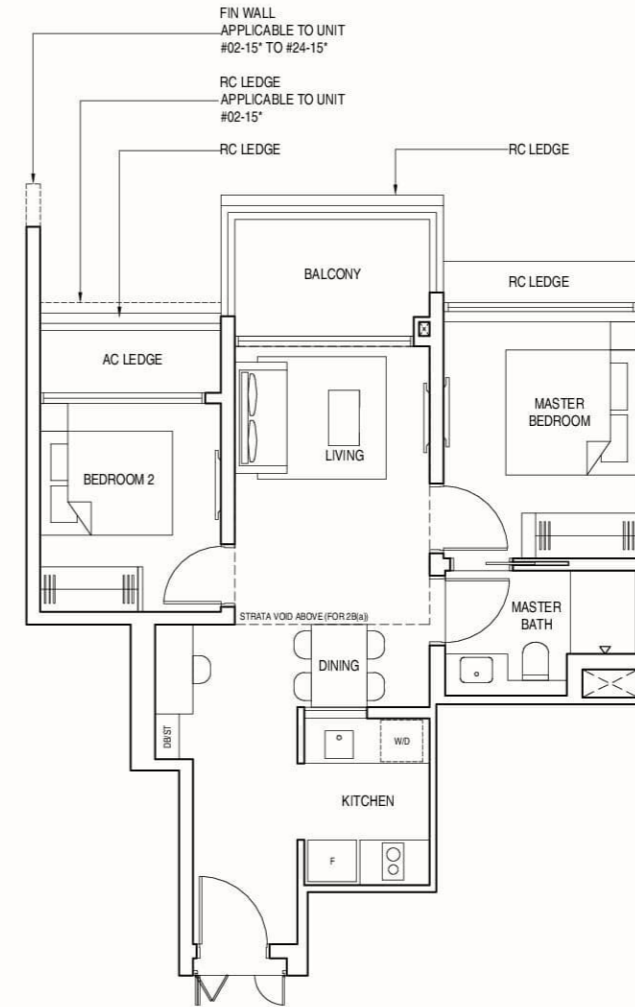
# 2-BEDROOM

## TYPE 2B & 2B(a)

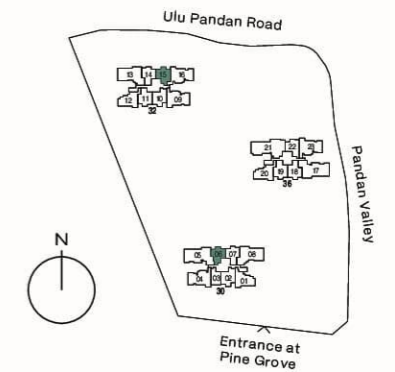
TYPE 2B  
65 sqm (700 sqft)  
#03-06 to #23-06  
#02-15\* to #23-15\*

TYPE 2B(a)  
79 sqm (850 sqft)  
Inclusive of strata void of 14 sqm (151 sqft) above living and dining

#24-06  
#24-15\*  
\*Mirrored unit



Areas include AC ledge and balcony, where applicable. All RC ledges are excluded from strata area and non-load bearing. The plans are subjected to change as may be required by relevant authorities. All areas and measurements stated herein as approximate and subject to final survey.



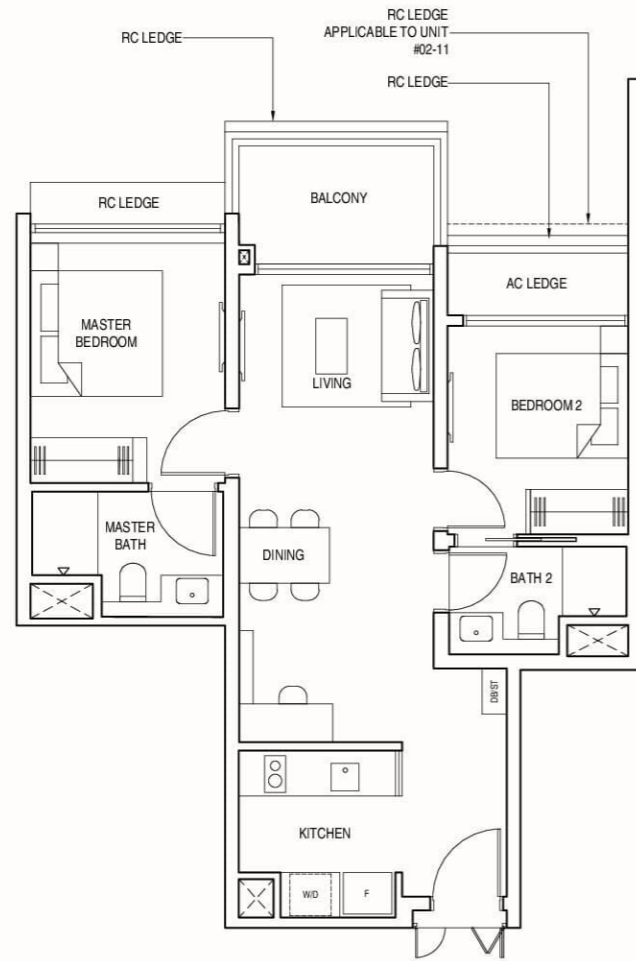


# 2-BEDROOM PREMIUM

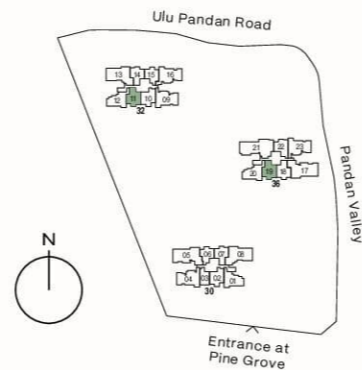
TYPE 2BP1

71 sqm (764 sqft)

#02-11 to #24-11  
#02-19 to #24-19



Areas include AC ledge and balcony, where applicable. All RC ledges are excluded from strata area and non-load bearing. The plans are subjected to change as may be required by relevant authorities. All areas and measurements stated herein as approximate and subject to final survey.



# 2-BEDROOM PREMIUM

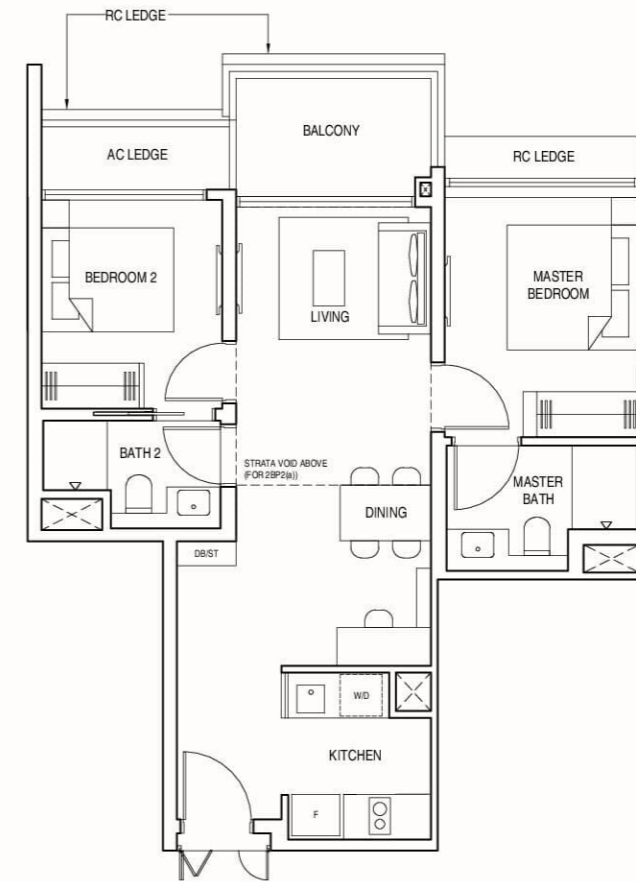
TYPE 2BP2 & 2BP2(a)

TYPE 2BP2  
71 sqm (764 sqft)

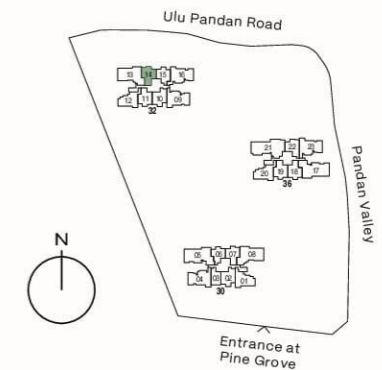
#02-14 to #23-14

TYPE 2BP2(a)  
85 sqm (915 sqft)  
Inclusive of strata void of  
14 sqm (151 sqft) above  
living and dining

#24-14



Areas include AC ledge and balcony, where applicable. All RC ledges are excluded from strata area and non-load bearing. The plans are subjected to change as may be required by relevant authorities. All areas and measurements stated herein as approximate and subject to final survey.





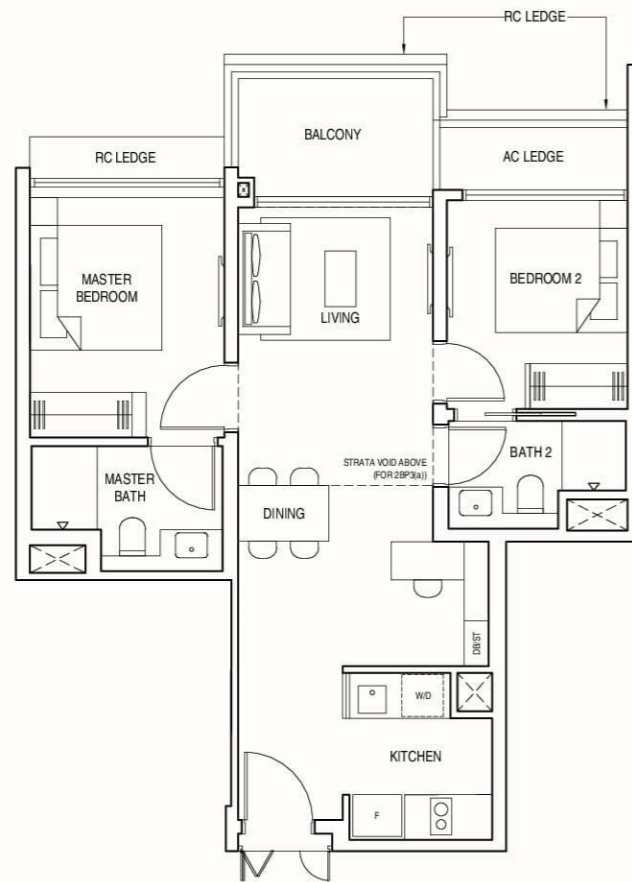
# 2-BEDROOM PREMIUM

TYPE 2BP3 & 2BP3(a)

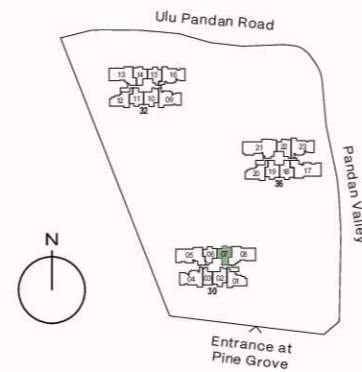
TYPE 2BP3  
71 sqm (764 sqft)  
#03-07 to #23-07

TYPE 2BP3(a)  
85 sqm (915 sqft)  
Inclusive of strata void of  
14 sqm (151 sqft) above  
living and dining

#24-07



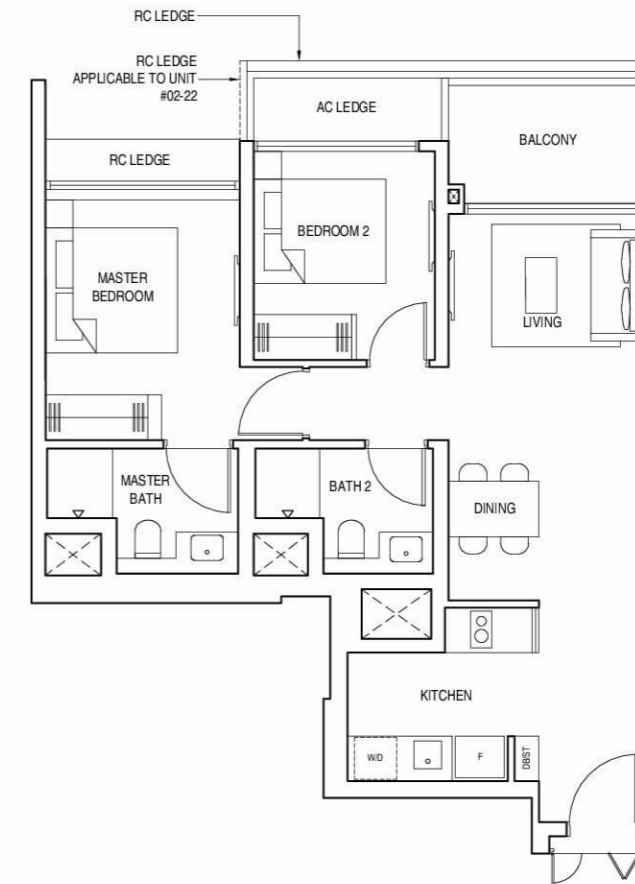
Areas include AC ledge and balcony, where applicable. All RC ledges are excluded from strata area and non-load bearing. The plans are subjected to change as may be required by relevant authorities. All areas and measurements stated herein as approximate and subject to final survey.



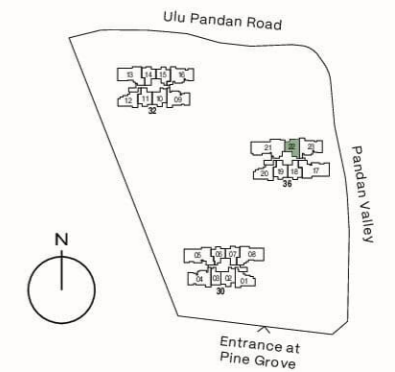
# 2-BEDROOM PREMIUM

TYPE 2BP4

72 sqm (775 sqft)  
#02-22 to #23-22



Areas include AC ledge and balcony, where applicable. All RC ledges are excluded from strata area and non-load bearing. The plans are subjected to change as may be required by relevant authorities. All areas and measurements stated herein as approximate and subject to final survey.



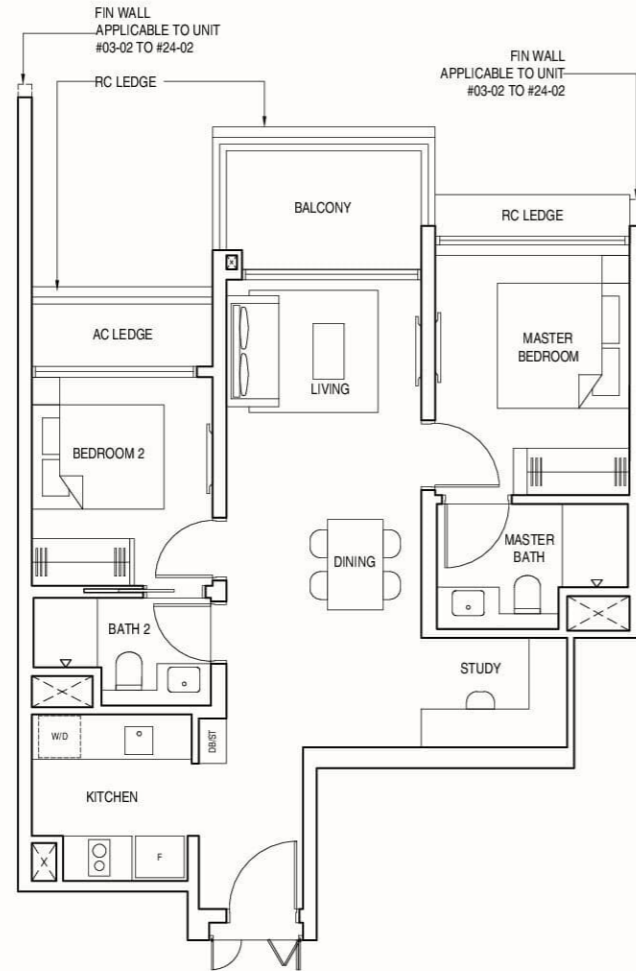


# 2-BEDROOM PREMIUM + STUDY

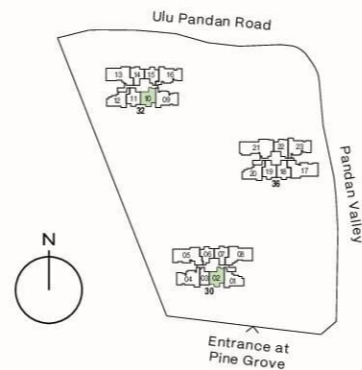
TYPE 2BPS1

74 sqm (797 sqft)

#03-02 to #24-02  
#02-10 to #24-10



Areas include AC ledge and balcony, where applicable. All RC ledges are excluded from strata area and non-load bearing. The plans are subjected to change as may be required by relevant authorities. All areas and measurements stated herein as approximate and subject to final survey.

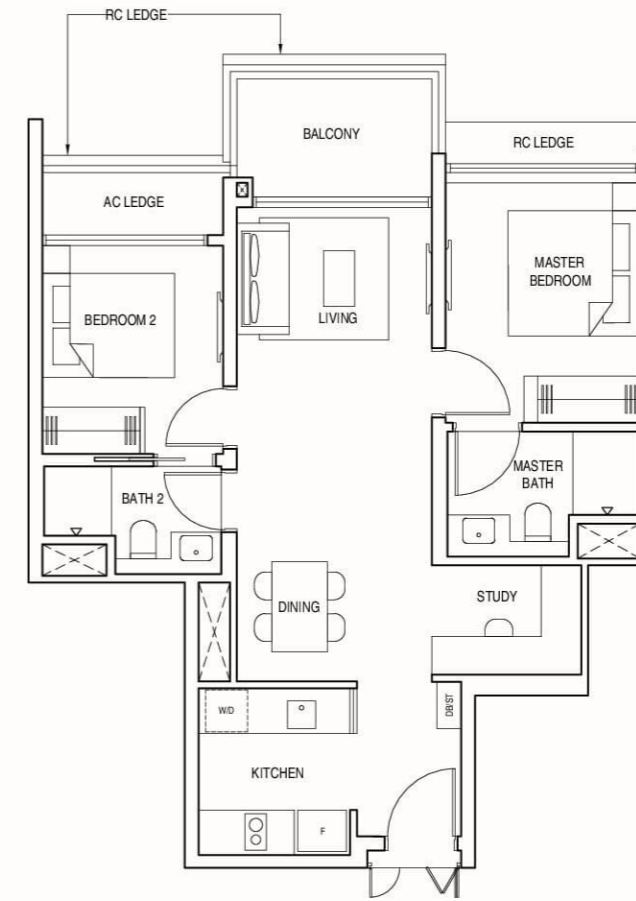


# 2-BEDROOM PREMIUM + STUDY

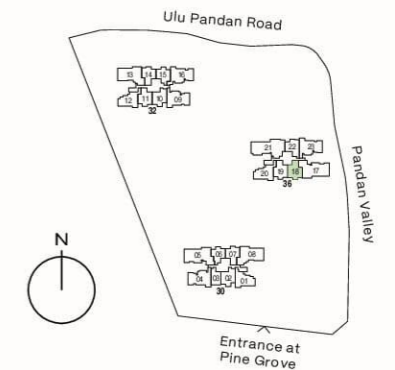
TYPE 2BPS2

74 sqm (797 sqft)

#02-18 to #24-18



Areas include AC ledge and balcony, where applicable. All RC ledges are excluded from strata area and non-load bearing. The plans are subjected to change as may be required by relevant authorities. All areas and measurements stated herein as approximate and subject to final survey.



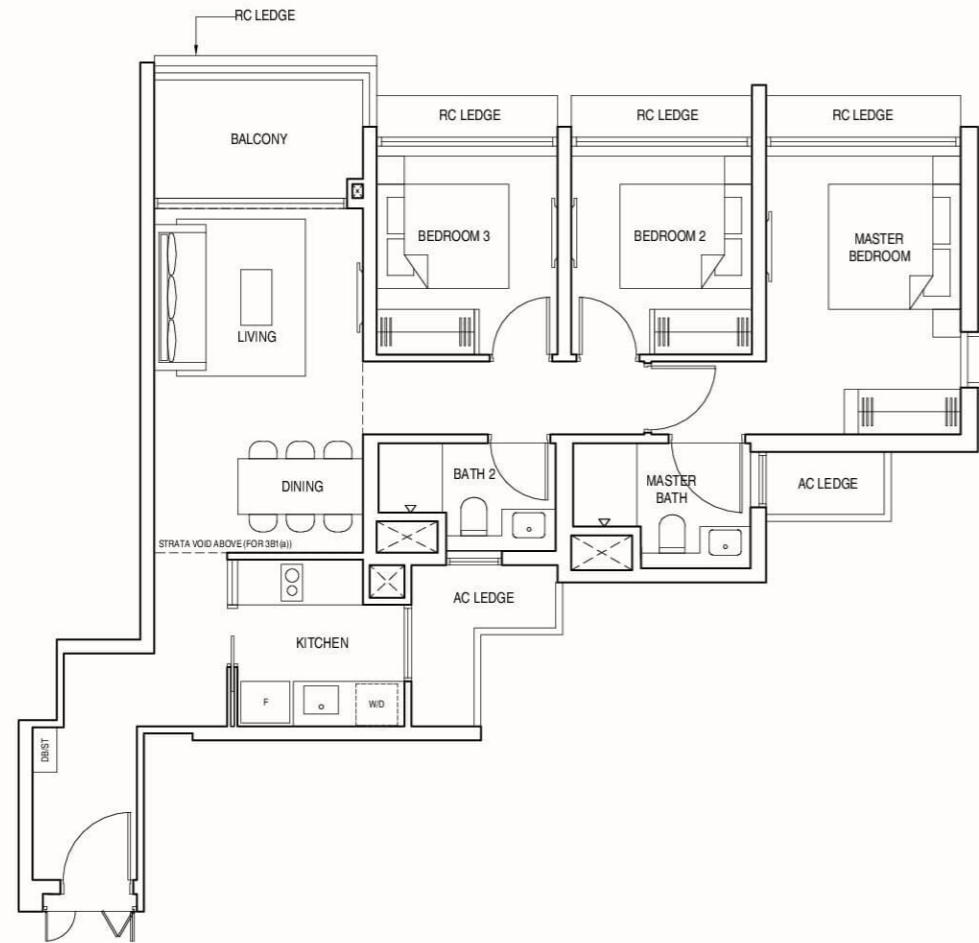
# 3-BEDROOM

TYPE 3B1 & 3B1(a)

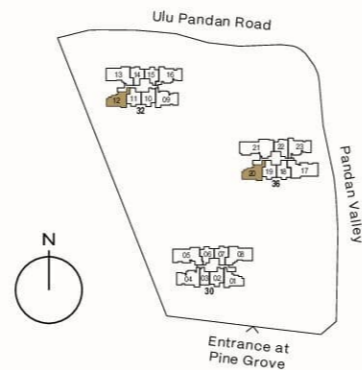
TYPE 3B1  
90 sqm (969 sqft)  
#02-12 to #23-12  
#02-20 to #23-20

TYPE 3B1(a)  
108 sqm (1163 sqft)  
Inclusive of strata void of  
18 sqm (194 sqft) above  
living and dining

#24-12  
#24-20



Areas include AC ledge and balcony, where applicable. All RC ledges are excluded from strata area and non-load bearing. The plans are subjected to change as may be required by relevant authorities. All areas and measurements stated herein as approximate and subject to final survey.



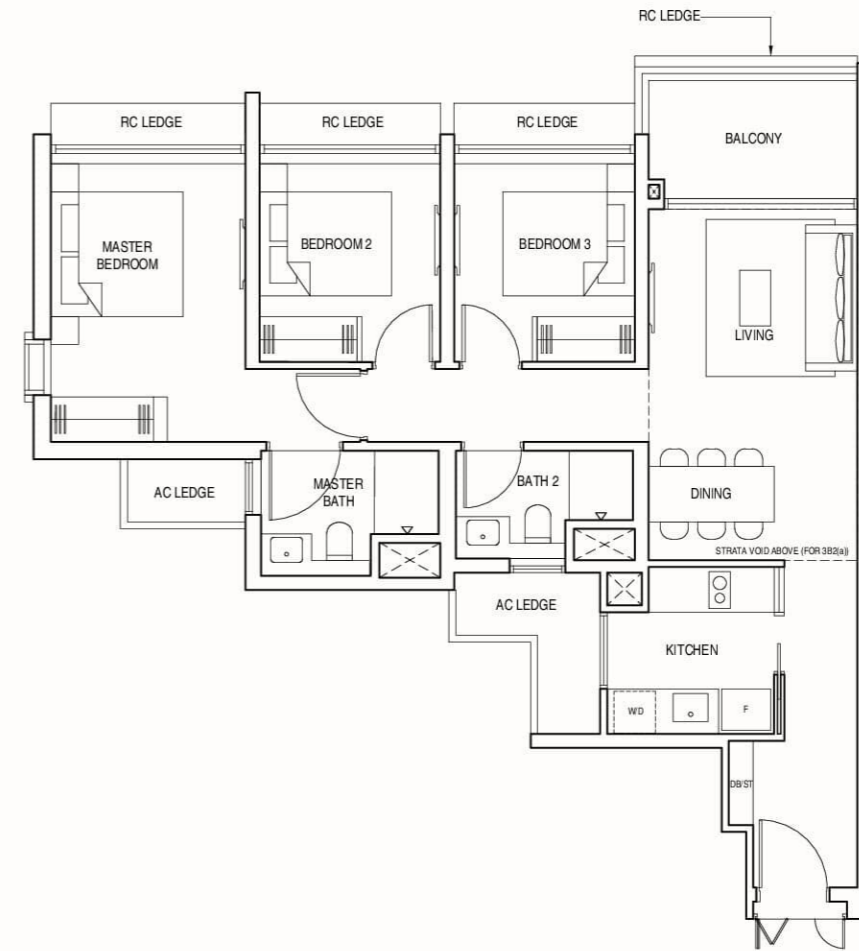
# 3-BEDROOM

TYPE 3B2 & 3B2(a)

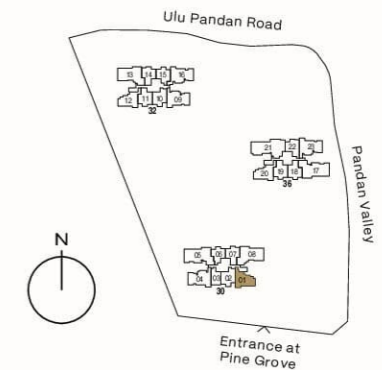
TYPE 3B2  
90 sqm (969 sqft)  
#03-01 to #23-01

TYPE 3B2(a)  
109 sqm (1173 sqft)  
Inclusive of strata void of  
19 sqm (205 sqft) above  
living and dining

#24-01



Areas include AC ledge and balcony, where applicable. All RC ledges are excluded from strata area and non-load bearing. The plans are subjected to change as may be required by relevant authorities. All areas and measurements stated herein as approximate and subject to final survey.



# 3-BEDROOM PREMIUM + STUDY

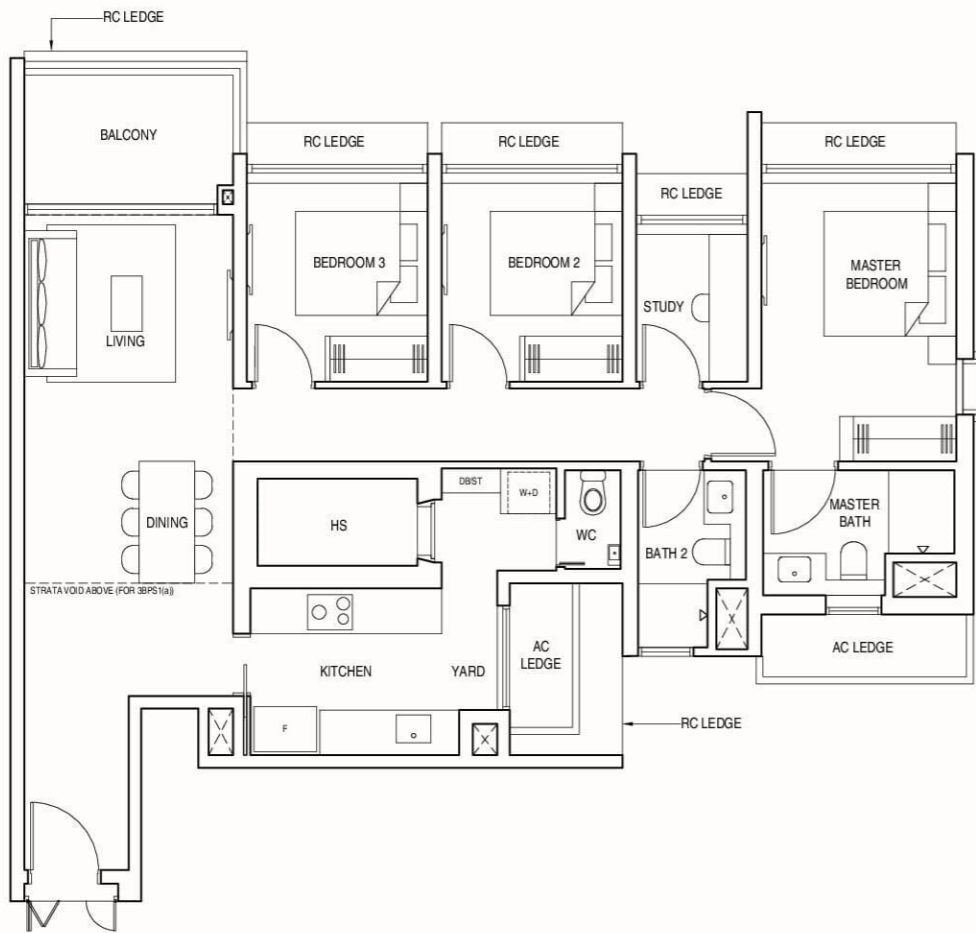
TYPE 3BPS1 & 3BPS1(a)

TYPE 3BPS1  
113 sqm (1216 sqft)

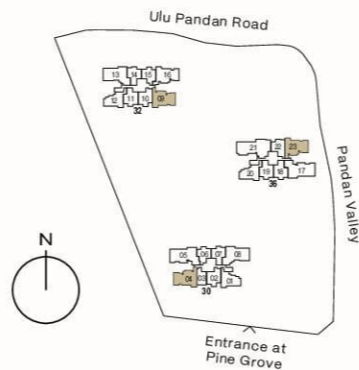
#03-04 to #23-04  
#02-09\* to #23-09\*  
#02-23 to #23-23

TYPE 3BPS1(a)  
132 sqm (1421 sqft)  
Inclusive of strata void of  
19 sqm (205 sqft) above  
living and dining

#24-04  
#24-09\*  
#24-23  
\*Mirrored unit



Areas include AC ledge and balcony, where applicable. All RC ledges are excluded from strata area and non-load bearing. The plans are subjected to change as may be required by relevant authorities. All areas and measurements stated herein as approximate and subject to final survey.



# 3-BEDROOM PREMIUM + STUDY

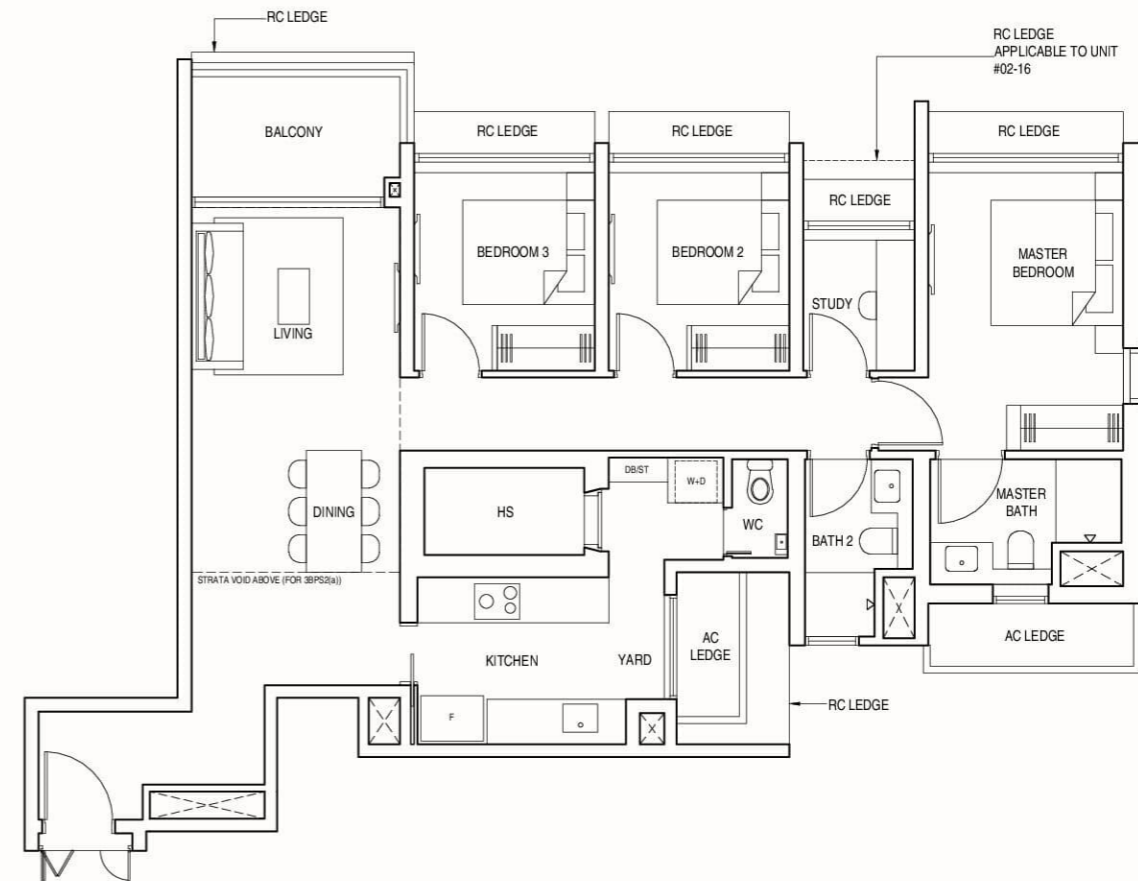
TYPE 3BPS2 & 3BPS2(a)

TYPE 3BPS2  
113 sqm (1216 sqft)

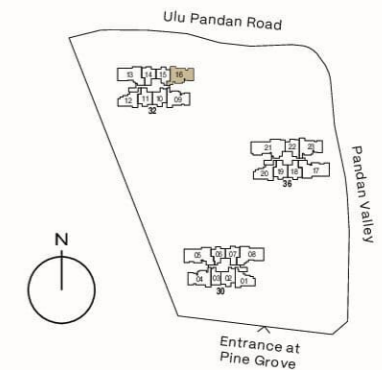
#02-16 to #23-16

TYPE 3BPS2(a)  
132 sqm (1421 sqft)  
Inclusive of strata void of  
19 sqm (205 sqft) above  
living and dining

#24-16



Areas include AC ledge and balcony, where applicable. All RC ledges are excluded from strata area and non-load bearing. The plans are subjected to change as may be required by relevant authorities. All areas and measurements stated herein as approximate and subject to final survey.





# 4-BEDROOM DELUXE (WITH PRIVATE LIFT)

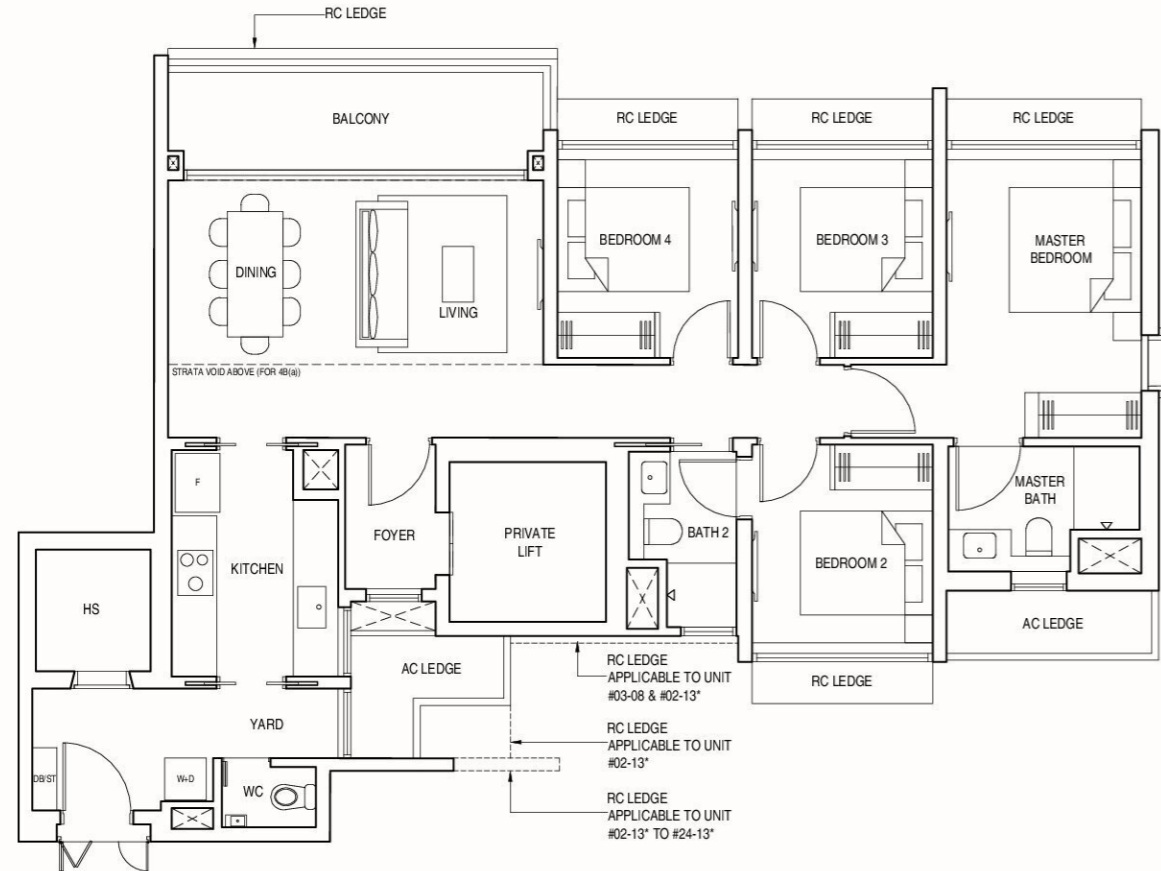
TYPE 4B & 4B(a)

TYPE 4B  
120 sqm (1292 sqft)

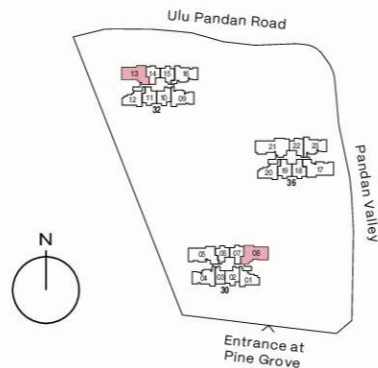
#03-08 to #23-08  
#02-13\* to #23-13\*

TYPE 4B(a)  
138 sqm (1485 sqft)  
Inclusive of strata void of  
18 sqm (194 sqft) above  
living and dining

#24-08  
#24-13\*  
\*Mirrored unit



Areas include AC ledge and balcony, where applicable. All RC ledges are excluded from strata area and non-load bearing. The plans are subjected to change as may be required by relevant authorities. All areas and measurements stated herein as approximate and subject to final survey.



# 4-BEDROOM PREMIUM (WITH PRIVATE LIFT)

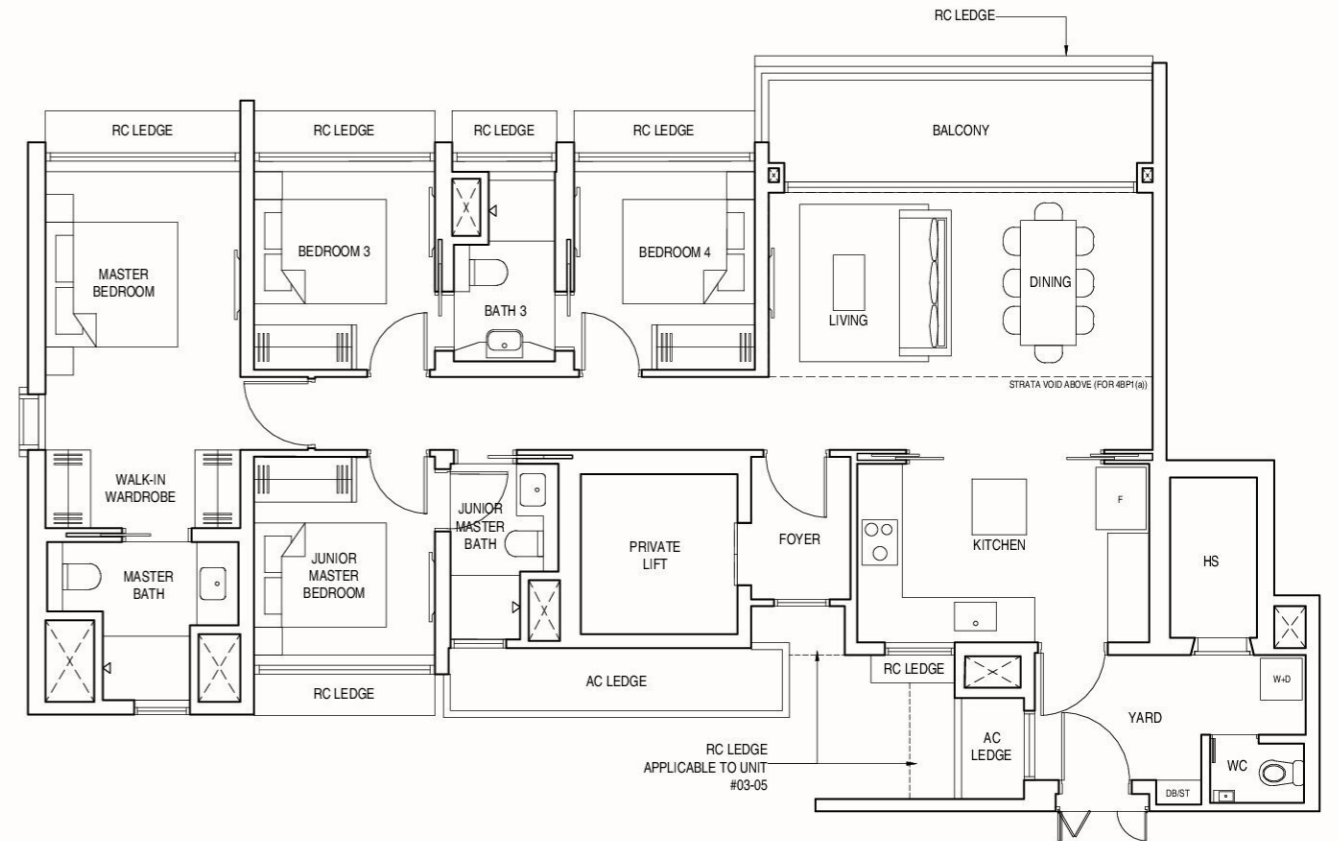
TYPE 4BP1 & 4BP1(a)

TYPE 4BP1  
136 sqm (1464 sqft)

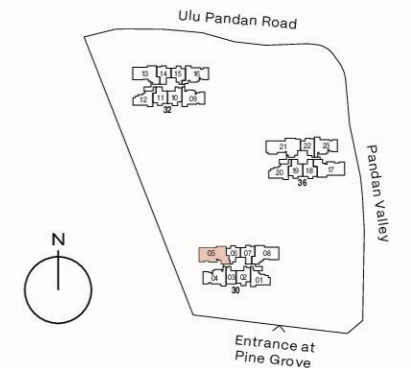
#03-05 to #23-05

TYPE 4BP1(a)  
155 sqm (1668 sqft)  
Inclusive of strata void of  
19 sqm (205 sqft) above  
living and dining

#24-05



Areas include AC ledge and balcony, where applicable. All RC ledges are excluded from strata area and non-load bearing. The plans are subjected to change as may be required by relevant authorities. All areas and measurements stated herein as approximate and subject to final survey.





# 4-BEDROOM PREMIUM (WITH PRIVATE LIFT)

TYPE 4BP2 & 4BP2(a)

TYPE 4BP2  
136 sqm (1464 sqft)

#02-17 to #23-17

TYPE 4BP2(a)  
155 sqm (1668 sqft)  
Inclusive of strata void of  
19 sqm (205 sqft) above  
living and dining

#24-17

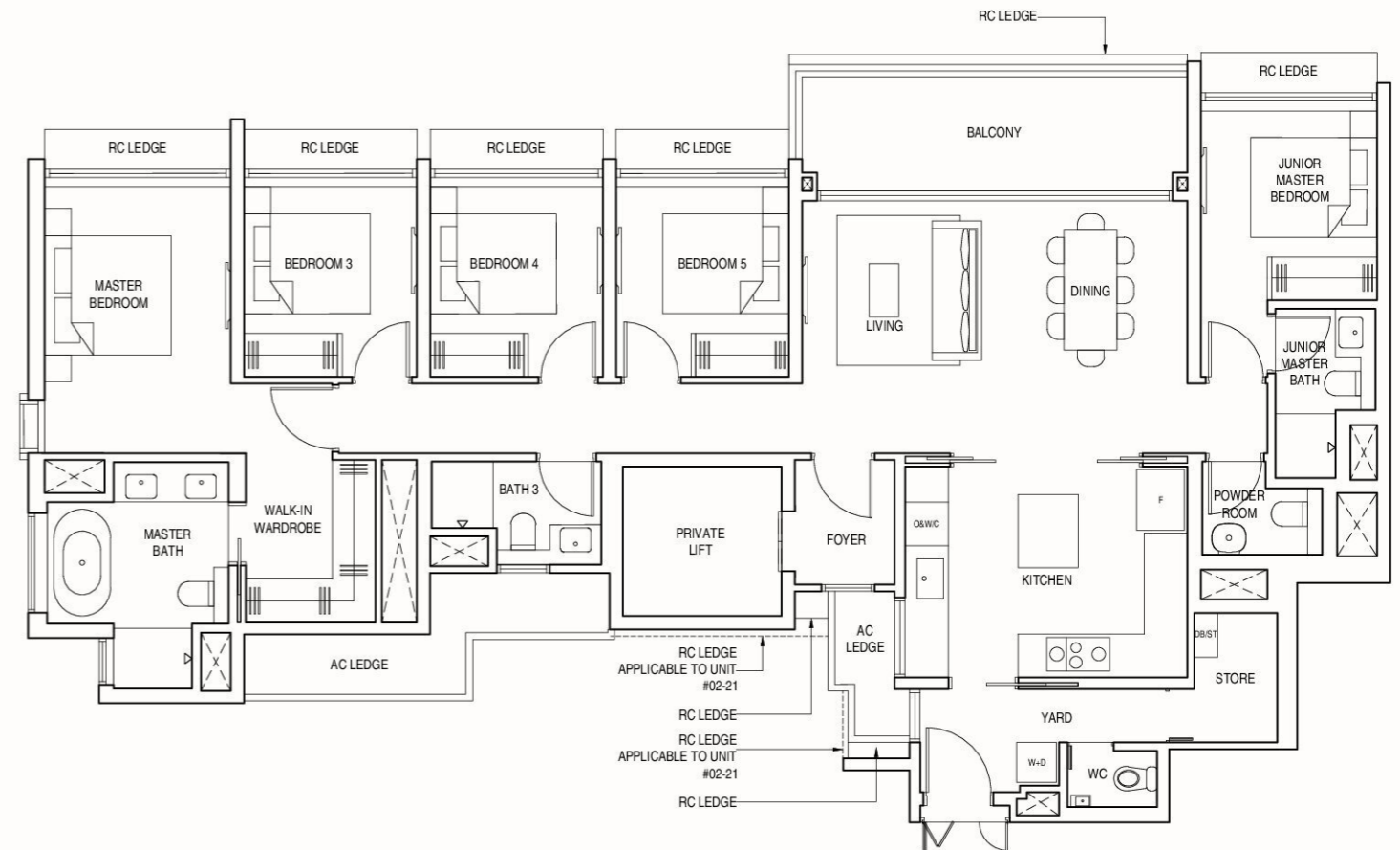
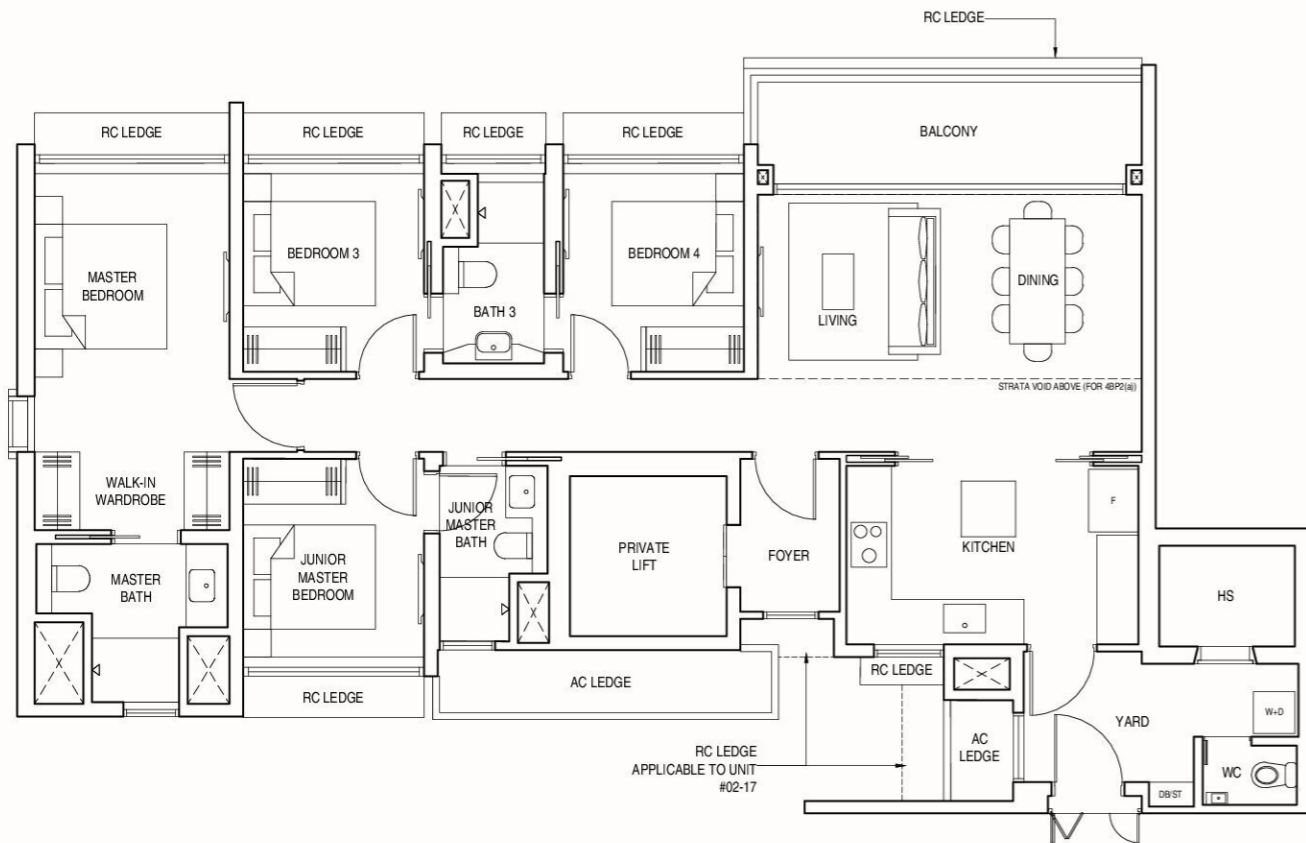


# 5-BEDROOM PREMIUM (WITH PRIVATE LIFT)

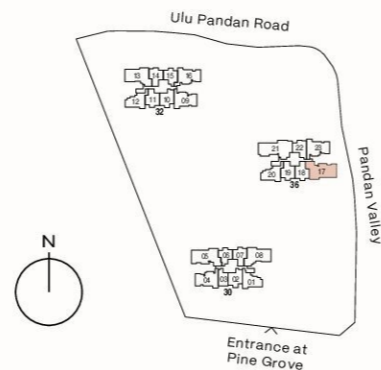
TYPE 5BP

161 sqm (1733 sqft)

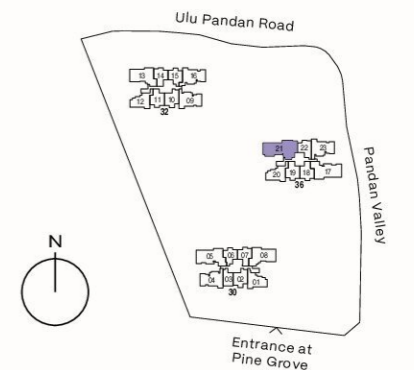
#02-21 to #23-21

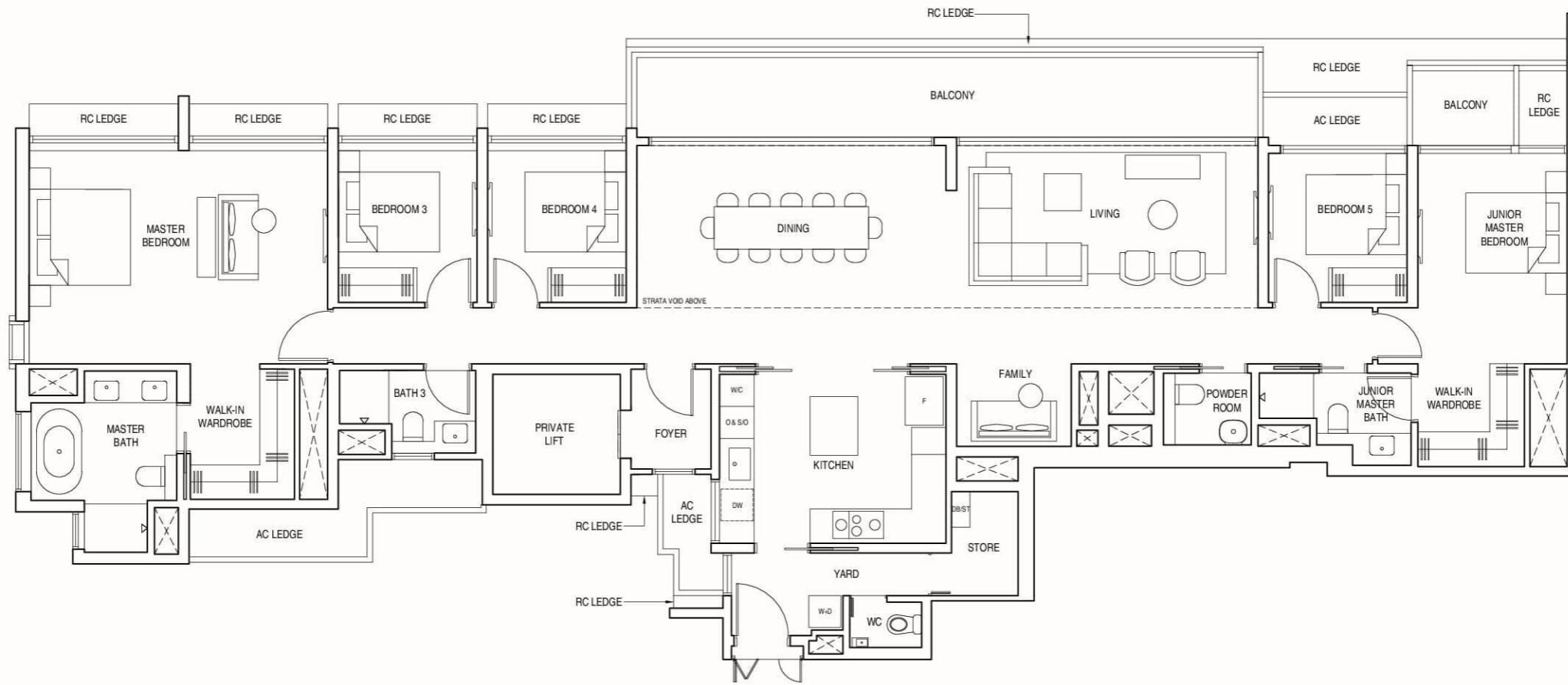


Areas include AC ledge and balcony, where applicable. All RC ledges are excluded from strata area and non-load bearing. The plans are subjected to change as may be required by relevant authorities. All areas and measurements stated herein as approximate and subject to final survey.

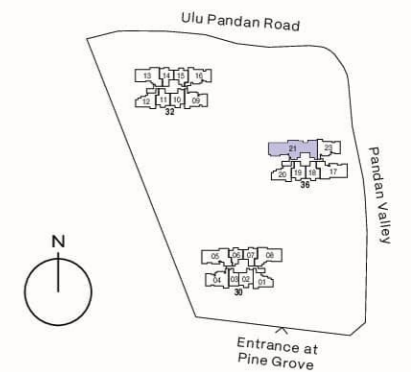


Areas include AC ledge and balcony, where applicable. All RC ledges are excluded from strata area and non-load bearing. The plans are subjected to change as may be required by relevant authorities. All areas and measurements stated herein as approximate and subject to final survey.





Areas include AC ledge and balcony, where applicable. All RC ledges are excluded from strata area and non-load bearing. The plans are subjected to change as may be required by relevant authorities. All areas and measurements stated herein as approximate and subject to final survey.



AN ELEVATED SANCTUARY  
WITH MAGNIFICENT VIEWS

ABOUND WITH OPTIONS  
FOR WORK AND PLAY





AN INSPIRING PARTNERSHIP BETWEEN  
TRUSTED, AWARD-WINNING DEVELOPERS



UOL Group Limited (UOL) is one of Singapore's leading public-listed property companies with total assets of about \$20 billion. The Company has a diversified portfolio of residential, commercial developments and investment properties, hotels and serviced suites in Asia, Oceania, Europe and North America. With a track record of 60 years, UOL strongly believes in delivering product excellence and quality service in all its business ventures. UOL, through its hotel subsidiary Pan Pacific Hotels Group Limited, owns three acclaimed brands namely "Pan Pacific", PARKROYAL COLLECTION and PARKROYAL. The Company's Singapore-listed property subsidiary, Singapore Land Group Limited, owns an extensive portfolio of prime commercial assets and hotels in Singapore.



UOL Homes is a collection of high quality homes by UOL Group, a leading developer and a trusted brand with proven track record of 60 years. We bring dedicated minds together, harmonising them to create endearing Masterpieces and enduring environments that are liveable. In doing so, we bring people and place together.



Singapore Land Group Limited (SingLand) is a premier real estate company listed since 1971. Working across a diverse portfolio of real estate including commercial offices, residential and retail properties and hotels, SingLand takes a holistic approach to development. Our residential portfolio is made up of a stellar cast of properties including Mon Jervois and V on Shenton while our commercial assets include some of Singapore's best-known commercial and retail landmarks such as UIC Building, Singapore Land Tower, The Gateway and Marina Square. From setting benchmarks to building landmarks, our residential and commercial portfolios represent our dedication to creative excellence and ambition to create inclusive and sustainable environments that elevate communities towards a better future.



# PINETREE HILL

## Developer

United Venture Development (No. 5) Pte. Ltd.

## Company Registration Number

202217866G

## Developer's License Number

C1449

## Tenure of Land

99 Years commencing from 12 September 2022

## Encumbrances

Caveats and Mortgage-in-escrow in favour of  
Oversea-Chinese Banking Corporation Limited

## Expected Date Of Notice Of Vacant Possession

30 September 2027

## Expected Date Of Legal Completion

30 September 2030

## Lot & Mukim Number

MK04 LOT 07402W at Pine Grove

For Enquiries and Appointment

